

ELNSM72M-HC-HV-N Series

MBB HC MONOCRYSTALLINE PV MODULE 565-580W



Sirius 182MM_N-TYPE Series

Elin redefined the high-efficiency module series by integrating 182mm silicon wafers with multi-busbar and half-cut cell technologies. Sirius combined creative technology with 182mm_N Type module. This caused effectively and extremely improved the module efficiency and power output.

KEY FEATURES



Less mismatch to get more power.



Less power loss by minimizing the shading impact.



Competitive low light performance.



SMBB Technology
Better light trapping and current collection to improve module power output and reliability.



In stringent environment condition :
• Sand, acid, salt and hail stones,
• 2400pa wind load and 5400pa snow load.
• PID FREE



3 times EL test to ensure best quality.

QUALITY SYSTEM



ISO 9001:2015, ISO 14001:2015, ISO 45001: 2018,
ISO 27001:2013, ISO 10002:2004

PRODUCT CERTIFICATION



TS EN 61215, TS EN 61730
IEC 61215, IEC 61730, IEC 62804 (PID FREE)
UL 61730-1, UL 61730-2

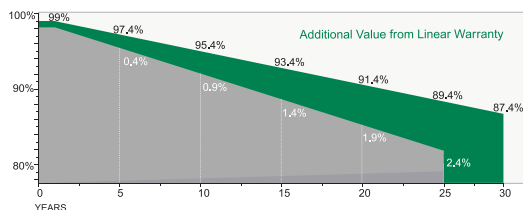
WARRANTY



15 YEARS
Guarantee On
Product



30 YEARS
Linear Power
Output Warranty

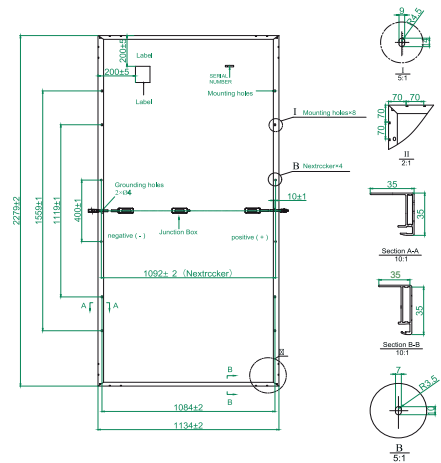
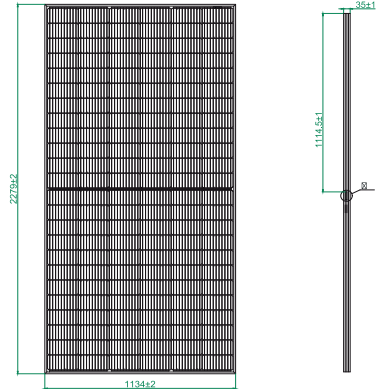


ELNSM72M-HC-HV-N Series

ELECTRICAL SPECIFICATIONS

Module Type	ELNSM72M-HC-HV-N-565		ELNSM72M-HC-HV-N-570		ELNSM72M-HC-HV-N-575		ELNSM72M-HC-HV-N-580	
	STC	NOCT	STC	NOCT	STC	NOCT	STC	NOCT
Maximum Power (Pmax)	565Wp	425Wp	570Wp	429Wp	575Wp	433Wp	580Wp	437Wp
Maximum Power Voltage (Vmp)	42.80V	40.22V	43.00V	40.44V	43.20V	40.63V	43.40V	40.86V
Maximum Power Current (Imp)	13.21A	10.57A	13.26A	10.61A	13.32A	10.66A	13.37A	10.70A
Open Circuit Voltage (Voc)	51.50V	48.93V	51.70V	49.12V	51.90V	49.31V	52.10V	49.50V
Short Circuit Current (Isc)	13.89A	11.11A	13.95A	11.16A	14.01A	11.21A	14.07A	11.26A
Module Efficiency STC (%)	21.86%		22.06%		22.25%		22.44%	
Power Tolerance(W)	(0, +4,99 W)							
Maximum System Voltage	1500V DC							
Maximum Series Fuse Rating	25 A							

* Measurement Tolerance +/- 3%
 STC: Irradiance 1000W/m2, module temperature 25°C, AM=1.5
 NOCT: Irradiance 800W/m2, Ambient Temperature 20°C, AM=1.5, Wind Speed 1m/s



TEMPERATURE CHARACTERISTICS

Pmax Temperature Coefficient	-0.30 %/°C
Voc Temperature Coefficient	-0.25 %/°C
Isc Temperature Coefficient	+0.046 %/°C
Operating Temperature	-40 ~ +85 °C
Nominal Operating Cell Temperature (NOCT)	45 ± 2 °C

MECHANICAL SPECIFICATIONS

External Dimensions	2279 x 1134 x 35 mm
Weight	27 kg
Solar Cells	Topcon (144 adet)
Front Glass	3.2 mm AR coating tempered glass
Frame	Eloksallı aluminium alloy
Junction Box	IP68,3 diodes
Output Cables*	4.0 mm ² , 250mm(+)/350mm(-)
Mechanical Load	Font side 5400Pa / Rear side 2400Pa

* Output cable lengths should be specified at the time of order.

PACKING CONFIGURATION

	2279x 1134 x 35 mm	
Container	20'GP	40'HQ
Pieces per Pallet	31+4*	31
Pallets per Container	4	20
Pieces per Container	124	620

* 31+4 pieces per pallet is the special package which only suits for container transport.

I-V CURVE İ

I-V Curve

